

# SUPERPRO/501S (C-YA-P-00013)

ULTRA-HIGH-SPEED UNIVERSAL PROGRAMMER



Comparison between SUPERPRO/501S and SUPERPRO/3000U concerning Period of PROGRAM and VERIFY

Device	SUPERPRO/501S Program+Verify (Sec)	Compare with SP3000U
AT28C64B	0.8 (P)+0.1 (V) = 0.9 (s)	1.2 (P)+0.8 (V) = 2.0 (s)
24AA128	2.7 (P)+1.8 (V) = 4.5 (s)	5.0 (P)+4.0 (V) = 9.0 (s)
QB25F640S33B60	29.0 (P)+14.4 (V) = 43.4 (s)	55.2 (P)+41.4 (V) = 96.6 (s)
AT89C55VWD	2.5 (P)+0.4 (V) = 2.9 (s)	3.3 (P)+1.0 (V) = 4.3 (s)
S25FL064A	43.9 (P)+14.7 (V) = 58.6 (s)	72.8 (P)+41.4 (V) = 114.2 (s)
PIC16F876A	10.1 (P)+0.8 (V) = 10.9 (s)	22.1 (P)+06.2 (V) = 28.3 (s)
PIC18F442	5.1 (P)+1.1 (V) = 6.2 (s)	13.6 (P)+06.7 (V) = 20.3 (s)

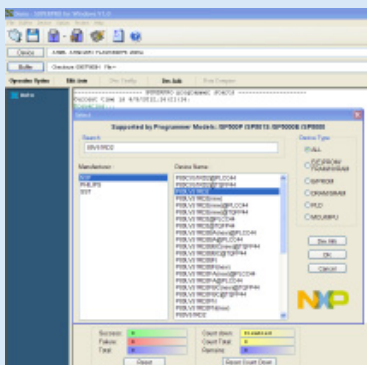
• When using STAND ALONE Mode, the Display and KEY SW are not interfaced with computer PC, but it has to interface with CompactFlash Card (OPTION).



• When using STAND ALONE Mode, user can setup password to protect the device from COPY IC.

**SUPERPRO/501S** is ULTRA-HIGH-SPEED UNIVERSAL PROGRAMMER that replaces SUPERPRO/3000U. There are 2 MODES in only one device. Firstly, it interfaces with computer PC through PORT USB; and secondly, it is STAND-ALONE MODE by loading IC data and COPY data into the device, without interfacing with any computer.

- Be compatible with 223 IC manufacturers; be compatible with 36,690 IC numbers and higher in the future
- Be used with IC devices from 1.2V to 5V with circuit that protects user from inserting IC in the reverse direction
- Be compatible with EPROM, PAGED EPROM PARALLEL AND SERIAL EEPROM, FPGA CONFIGURATION, SERIAL PROM, FLASH MEMORY (NOR AND NAND), BPROM, NVRAM, SPLD, CPLD, EPLD, FIRMWARE HUB, MICROCONTROLLER, MCU, STANDARD LOGIC
- Use TEXT TOOL 48PIN, so it is compatible with IC numbers from 8PIN to 48PIN well. Moreover, it can expand pin to use with more IC numbers such as SSOP, PLCC by using ADAPTER (ADAPTER is OPTION, not including in the set)PROGRAM HIGH-DWENSITY FLASH MEMORY can be used with COPY EPROM quickly
- Has 6 KEY KEYPAD with 20 x 4 LCD DIPLSAY with CompactFlash Memory Card Expansion
- Interface with computer through PORT USB
- When using STAND ALONE Mode, it has to interface with CompactFlash Card (OPTION) and user can setup password to protect the device from COPY. This STAND ALONE MODE is suitable for using when user has prepared data completely and it is ready to COPY many IC directly, without using with computer. So, it is suitable for using outdoor.
- Run under OS of WINDOWS 98/ ME/XP/VISTA/7
- Can UPDATE PROGRAM to use with newer IC numbers from INTERNET, visit website; [www.xeltek-cn.com](http://www.xeltek-cn.com); or read more information concerning available IC numbers from this WEB.



• Run under OS of WINDOWS 98/ ME/XP/VISTA/7

**SUPERPRO/501S** consists of ...

1. SUPERPRO/501S
2. CD-ROM; Program
3. POWER SUPPLY AC 90V-250V/50-60 Hz
4. USB Cable
5. User's Manual

