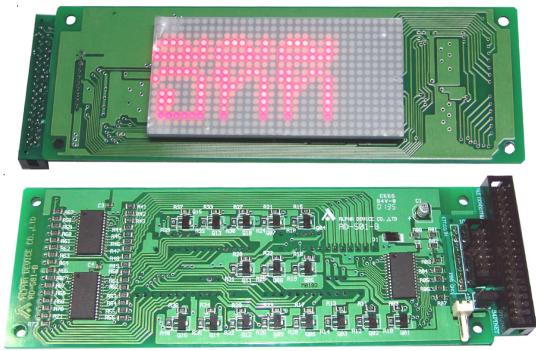


**ET-DISPLAY 16 X 32 V1(P-ET-A-00228)**



ET-DISPLAY 16 X 32 V1 ET-DISPLAY 16 x 32 V1 BE ABLE TO CONNECT WITH ETT'S BOARD THROUGH PORT 34 PIN AND 10 PIN, BOARD SIZE 16 x 32 DOT (512 DOT) BE ABLE TO DISPLAY IN THAI

• IN ET-DISPLAY 16 x 32 V1 USES AD-SOI-B DISPLAY MONITOR FROM ALPHA DEVICE CO. LTD. AS RED LED SIZE 16 x 32 WITH 3-CH.IC LC7932M (16 BIT BI-DIRECTIONAL SHIFT REGISTER) TO RUN DOT MATRIX LED

• DISPLAY BOARD BE ABLE TO CONNECT WITH ETT'S BOARD SUCH AS I/O PORT 34 PIN AND 10 PIN ET BUS

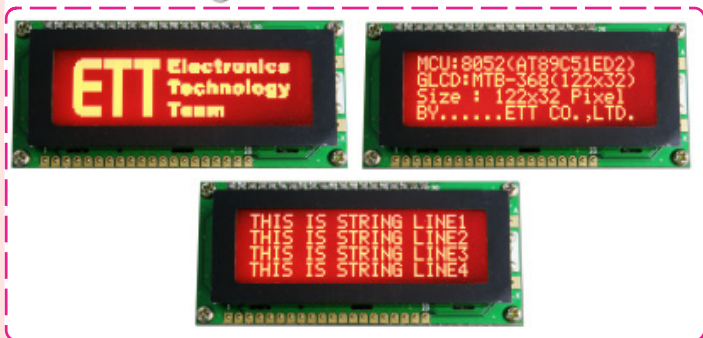
- PCB SIZE 16.5 x 5.4 CM.
- LED DISPLAY 4.1 x 8.2 CM.(RED LED SIZE 2 MM.)
- ET-DISPLAY 16 x 32 V1 INCLUDES;

1. DISPLAY 16 x 32 BOARD
2. 34 PIN PAIR CABLE HEADER
3. 10 PIN PAIR CABLE HEADER,
4. CD-ROM



**GLCD MTB-368 (A-LC-G-00023)**

**new GLCD MTB-368**  
122 x 32 DOT



- This GLCD is special OFFER product.
- It is 122 x 32 DOT GRAPHIC LCD with orange TRANSMISSIVE LED BACKLIGHT (ORANGE); it has to interface LED BACKLIGHT in order to obviously see DOT of LED
- Connector 20 PIN HEADER Straight Row, interface with 5VDC
- Use 2 IC CONTROLLERS of EPSON SED 1520
- Can display data by interfacing through PORT or BUS of MCU
- LCD size: 80.0(W) x 36.0(H) x 12.9(D) mm.
- Provide example programs and User's Manual in CD-ROM



**CHARACTER TYPE LCD MODULE**



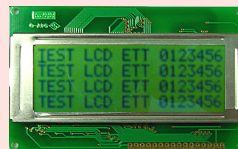
16116H (16 Characters 1 Lines)  
16116H (16 Characters 1 Lines LED BACKLIGHTS)



16216H (16 Characters 2 Lines)  
16216H (16 Characters 2 Lines LED BACKLIGHTS)



16416H (16 Characters 4 Lines)  
16416H (16 Characters 4 Lines LED BACKLIGHTS)



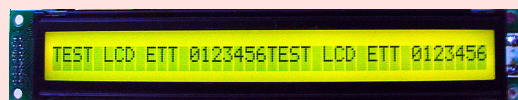
20416H (20 Characters 4 Lines)  
20416H (20 Characters 4 Lines LED BACKLIGHTS)



20216H (20 Characters 2 Lines)  
LED BACKLIGHTS)



LM060L (24 Characters 2 Lines)



DMC40131H (40 Characters 1 Lines LED BACKLIGHTS)



TM402CD BACKLIGHTS (40 Characters 2 Lines LED BACKLIGHTS)  
40216H (40 Characters 2 Lines)

**GRAPHIC TYPE LCD MODULE**

It's Character and Graphic LCD with 128 x 64 DOT and be able to display in Thai. It is BIT Map Display with Dish of Thai Program and be able to support display Thai Code KU directly (Instruction Program of CPU Z80).



DV 128064H (128 DOT X 64 DOT)  
DV 128064 LED BACKLIGHTS(128 DOT X 64 DOT)