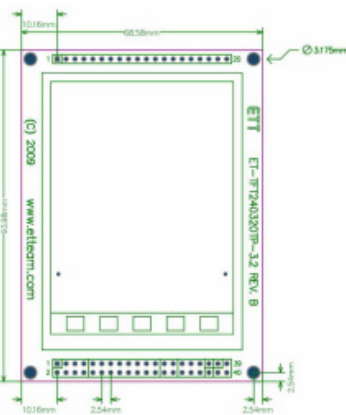
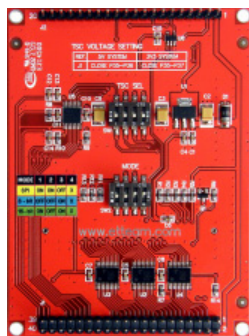


**ET-TFT240320TP-3.2 REV C**

(P-ET-A-00414)



**Specifications of Board**

- It is MODULE TFT LCD that is assembled with board and circuit
- DISPLAY is MODULE TFT LCD COLOR with 240X320 PIXEL TOUCH SCREEN
- 3.2 inch wide Screen with 65536 colored Resolution (RGB is R =5 BIT, G = 6BIT, B = 5BIT)
- It uses SINGLE CHIP DRIVER No.SPFD 5408A
- There are 3 modes of INTERFACE LCD;
  1. SERIAL MODE SPI uses I/O 10PIN to communicate.
  2. PARALLEL MODE 16BIT uses I/O 27PIN to communicate.
  3. PARALLEL MODE 8BIT uses I/O 19PIN to communicate.
- There are 2 types of INTERFACE to control TOUCH SCREEN;
  1. SPI Interface through CHIP TOUCH SCREEN CONTROLLER No.ADS7846 (ON BOARD) with 12BIT Resolution
  2. Directly interface X-,X+,Y-,Y+ of LCD with Pin A TO D of MCU
- If TOUCH SCREEN is not used, user can connect only Signal I/O in the part of LCD.
- It can interface with MCU that is both Power Supply 5V and 3.3V.
- There are 2 types of CONNECTOR;
  1. PARALLEL MODE 16 & 8BIT is interfaced through PIN HEADER 2 X 20 (PITCH 2.54mm.)
  2. SPI MODE is interfaced through PIN HEADER 1X20 (PITCH 2.54mm.)
- It uses IC 74LCX245 to be BUFFER and IC AP1117-3.3 to be POWER.
- POWER SUPPLY is +5VDC.
- Size of board with LCD is 68.58x93.98mm.
- It includes example programs for using with ETT Board; in this case, there is MCU No.AVR ATMEGA128, PIC PIC18F8722, and ARM LPC2138.
- ET-TFT240320TP-3.2 REV B consists of
  1. Board with LCD
  2. CD-ROM Example Program and User's Manual



**ET-TFT240320TP-2.8**

(P-ET-A-00466)

New TFT LCD in mini size of 2.8" and economy price



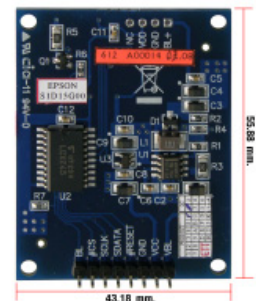
**Specifications of Board**

- Be DISPLAY MODULE TFT LCD COLOR with 40x320 PIXEL RESISTANCE TOUCH SCREEN
- Use 2.8" TFT Display
- Use SINGLE CHIP DRIVER No.HX8347-D
- 65536 Colored Resolutions (RGB = R:5BIT, G:6BIT, B:5BIT)
- Has 2 INTERFACE Modes to interface with LCD;
  1. PARALLEL MODE 16 BIT INTERFACE uses 27 Pin I/O to interface
  2. PARALLEL MODE 8 BIT INTERFAE uses 19 Pin I/O to interface
- There are 2 INTERFACE Modes to control TOUCH SCREEN
  1. SPI INTERFACE is interfaced through CHIP TOUCH SCREEN CONTROLLER No.ADS7846 (ON BOARD) with 12BIT Resolution
  2. Directly interface with X-,X+,Y-,Y+ of LCD to Pin A TO D of MCU
- Can interface with MCU that is either 5V or 3.3V
- There are 2 sets of CONNECTOR
  1. 2 x 20PIN HEADER 2.54mm.
  2. 1 x 20PIN HEADER 2.54mm.
- Use IC 74LCX245 to be BUFFER and IC LM1117-3.3
- Use Power Supple +5VDC for Board
- PCB Size is 68.58 x 93.98 mm.
- Provide example programs for using with ETT Board; MCU No.AVR ATMEGA128, PIC PIC18F8722, ARM LPC2138
- ET-TFT240320TP-2.8 consists of ...
  1. Board with LCD
  2. CD-ROM; User's Manual and Programs



**ET-LCD6610**

(P-ET-A-00362)



- 132 x 132 DOT GRAPHIC LCD Display
- 4,096 Colors
- Internal LED BACKLIGHT
- 9 BIT SPI SERIAL INTERFACE
- Chip Processor of EPSON S1D15G10 or COMPATIBLE numbers
- Use DC POWER 3.3V - 5.5V
- Directly interface to Microcontroller with 3.3V - 5V
- LCD and PCB size: 55.88 x 43.18 mm.
- Thai User's Manual and Example Programs in CD-ROM

