

ET-HARDWARE KIT V1
(P-ET-A-00109)

ET-HARDWARE KIT V1 ... It is accessory of new inventor for study Microcontroller CPU MCS51, PIC, AVR, 68HC of MOTOROLA, BASIC STAMP. Users can experiment with Project Board by design board or write program to control basic Electronics Circuit. There's many accessories in ET-HARDWARE KIT V1 such as R, C, LED, 7-SEGMENT, SWITCH, STEPPING MOTOR, SPEAKER, MANUAL in Plastic Box.



ET-HARDWARE KIT V1 include ...

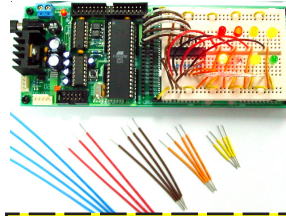
□ R 1/4W 5% 560 Ω	20 pcs.	
□ R 1/4W 5% 10 KΩ	20 pcs.	
□ R 1/4W 5% 1 KΩ	20 pcs.	
□ R 1/4W 5% 4.7 KΩ	20 pcs.	
□ R 1/4W 5% 2 KΩ	20 pcs.	
□ LED 3 mm. RED	10 pcs.	
□ LED 5 mm. GREEN		
□ DIP SW 8 POINT	1 pcs.	
□ TACT SW DTS 63K		
□ LED 7-SEGMENT(TOS5161A,TOS5161B)	2 pcs.	
□ 12 KEY SW TELEPHONE	1 pcs.	
□ IC ULN2003	1 pcs.	
□ IC 74LS04	1 pcs.	
□ IC 74HC595	1 pcs.	
□ STEPPING MOTOR		
□ VR 10K		
□ C 0.1 uF MULTILAYER	8 pcs.	
□ C 10 uF 16V ELECTROLYTIC	8 pcs.	
□ MINI SPEAKER	1 pcs.	
□ DIODE 1N4148	8 pcs.	
□ R PACK 10K 9 PIN		
□ R PACK 4.7K 5 PIN		
□ TRANSISTOR BC547	4 pcs.	
□ TRANSISTOR BC557	4 pcs.	

Moreover, there's ETT's books of experimental manual ET-HARDWARE KIT V1 named "Experimental Manual PIC16F877 and PIC18F458" "Experimental Manual AVR AT90S8535 and ATMEGA163" and "Work Sheets of Microcontroller Z8Encore". In other CPU such as MCS51, BASIC STAMP..., there's books for experimental manual ET-HARDWARE KIT V1.

ET-JW BOX 300 (P-ET-A-00199)



It's suitable for ETT's accessories connected with board, Project Board, especially 22AWG Wire. It's good for Connector Port and Project Board more than Telephone Wire. It is cut by cut machine, so it doesn't break while using. There's 300 Jumper Wires 6 long-sizes per set; 3CM, 5CM, 7CM, 10CM, 15CM, 18CM long. Cut 1 cm. at header of 50 Jumper Wire. It is contained in Plastic Box which a small box inside to keep Jumper Wire in different size and be able to carry easily.



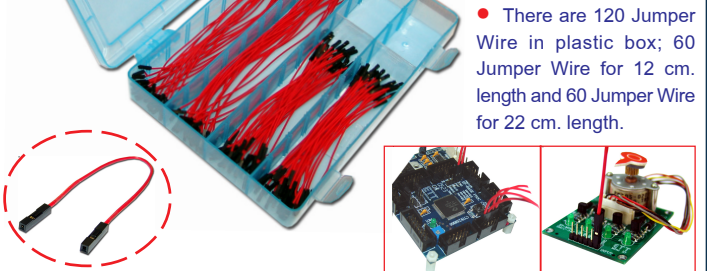
JUMPER WIRE REFILL

There's only 6 long-size of 50 Jumper Wires per set.

- 1.ET-JWR03 AS 3 CM.LONG 50 JUMPER WIRES / SET
- 2.ET-JWR05 AS 5 CM.LONG 50 JUMPER WIRES / SET
- 3.ET-JWR07 AS 7 CM.LONG 50 JUMPER WIRES / SET
- 4.ET-JWR10 AS 10 CM.LONG 50 JUMPER WIRES / SET
- 5.ET-JWR15 AS 15 CM.LONG 50 JUMPER WIRES / SET
- 6.ET-JWR18 AS 18 CM.LONG 50 JUMPER WIRES / SET

ET-FF BOX 120 (P-ET-A-00249)

ET-FF BOX 120 is a kind of Jumper Wire that is produced by ETT. It is supply cable No. AWG 24 UL 107 and both side of Jumper Wire is interfaced to be Female. It can be interfaced between HEADER MALE and Boards easily. Moreover, it can be interfaced as independently or interfaced with Board TRAINING KIT of ETT that has HEADER MALE or interfaced with BOARD MINI I/O.



- There are 120 Jumper Wire in plastic box; 60 Jumper Wire for 12 cm. length and 60 Jumper Wire for 22 cm. length.

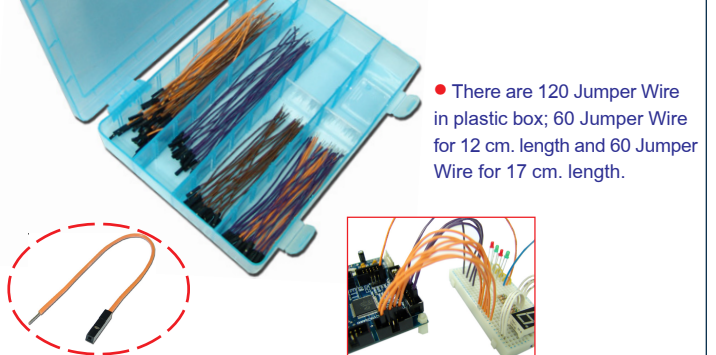
JUMPER REFILL

1. ET-FF WR 12 (P-ET-A-00251) is supply Jumper Wire with Connector Female (both side) and is 12 cm. length. There are 20 JumperWire per set.
2. ET-FF WR 12 (P-ET-A-00252) is supply Jumper Wire with Connector Female (both side) and is 12 cm. length. There are 20 Jumper Wire per set.

ET-FM BOX 120 (P-ET-A-00250)

ET-FM BOX 120 which is a kind of single Jumper Wire No.22AWG is stiff type. One side is interfaced with Connector Female and other one side is peeled. So, it can be interfaced with HEDAER MALE and other one side is interfaced with HEADER FEMALE or PROJECT BOARD.

It make us can apply for various project works.



- There are 120 Jumper Wire in plastic box; 60 Jumper Wire for 12 cm. length and 60 Jumper Wire for 17 cm. length.

JUMPER REFILL

1. ET-FM WR 12 (P-ET-A-00253) is stiff Jumper Wire with Connector Female (only one side) and is 12 cm. length. There are 20 Jumper Wires per set.
2. ET-FF WR 22 (P-ET-A-00254) is supply Jumper Wire with Connector Female (only one side) and is 22 cm. length. There are 20 Jumper Wires per set.