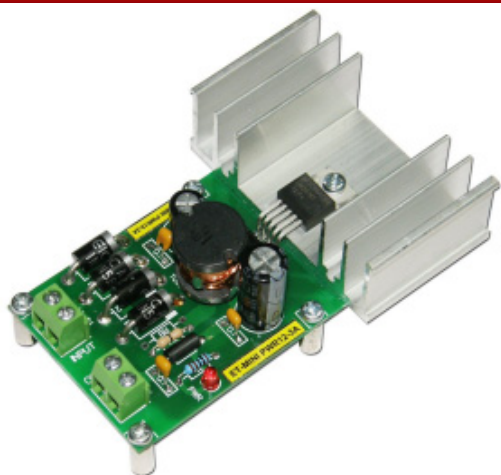


ET-MINI PWR5-3A (P-ET-A-00455)

ET-MINI PWR12-3A (P-ET-A-00456)

ET-MINI PWR3.3-3A (P-ET-A-00457)



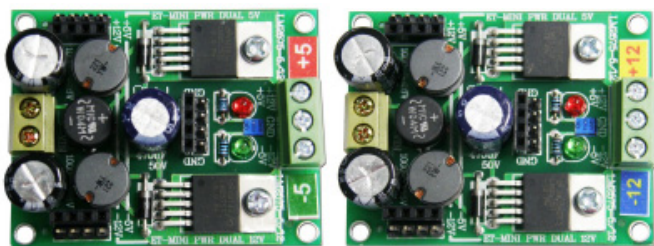
It is POWER SUPPLY in the format of Circuit STEP-DOWN Voltage Regulator OUTPUT 3A that uses IC No.LM2576. There are 3 sizes of OUTPUT Voltage as follows;

- ET-MINI PWR5-3A gives OUTPUT 5VDC/3AMP: INPUT VOLT 9 - 35 VDC.
- ET-MINI PWR12-3A gives OUTPUT 12VDC/3AMP: INPUT VOLT 15 - 35 VDC.
- ET-MINI PWR3.3-3A gives OUTPUT 3.3VDC/3AMP: INPUT VOLT 7 - 35 VDC.

It uses Connector 2PIN TERMINAL INPUT (5mm.) and Connector 2PIN Terminal OUTPUT (5mm.). The board size with HEAT SINK (ET-MINI PWR 5-3A) gives OUTPUT 5VDC/3AMP: INPUT VOLT 9-35 VDC (WxLxD) 6.0 x 9.0 x 3.5 cm.

ET-MINI PWR DUAL 5 (P-ET-A-00307)

ET-MINI PWR DUAL 12 (P-ET-A-00308)



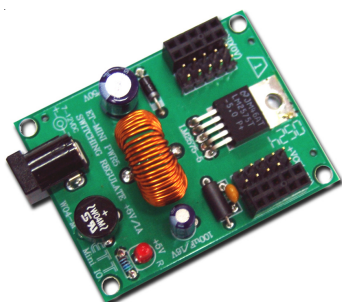
ET-MINI PWR DUAL 5

ET-MINI PWR DUAL 12

It is POWER SUPPLY that has positive and negative power supply from OUTPUT and only positive power supply from INPUT. In this case, it uses 2 Circuit STEP-DOWN VOLTAGE REGULATORS; No.LM2575T-5 of DUAL 5 and No.LM2575T-12 of DUAL 12.

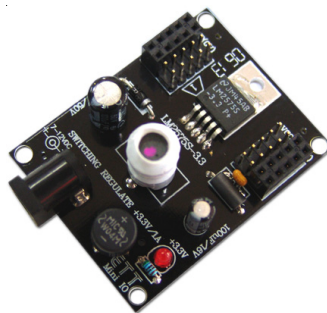
- INPUT DC POWER 7 - 24VDC
- OUTPUT +5V, -5V Common GND, 1A CURRENT in ET-MINI PWR DUAL 5
- OUTPUT +12V, -12V Common GND, 1A CURRENT in ET-MINI PWR DUAL 12
- Connector INPUT DC 2PIN PCB TERMINAL SCREW TYPE
- Connector OUTPUT DC 3PIN PCB TERMINAL SCREW TYPE
- PCB size 4.5 x 5.6 cm.

ET-MINI PWR 5 (P-ET-A-00233)



It is Power Supply in Step-Down Voltage Regulator CIRCUIT and uses IC NO.LM2575-5. Be able to receive INPUT DC Power 9-35V to OUTPUT 5VDC. Port INPUT is DC JACK size 2.5mm. and PORT OUTPUT is HEADER MALE and HEADER FEMALE.

ET-MINI PWR 3.3 (P-ET-A-00289)

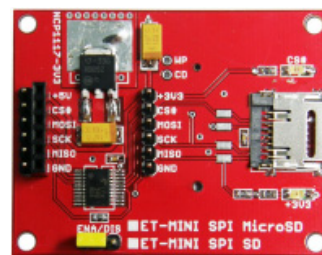


It is POWER SUPPLY as Step-Down Voltage Regulator type that uses IC No.LM2575S-3.3.

It can receive INPUT DC POWER 5-35V; can give OUTPUT 3.3VDC. CONNECTOR INPUT is DC JACK TYPE 2.5mm; CONNECTOR OUTPUT is MALE HEADER and FEMALE HEADER.

ET-MINI SPI MICRO SD (P-ET-A-00431)

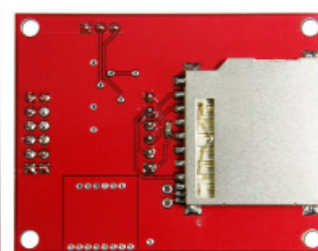
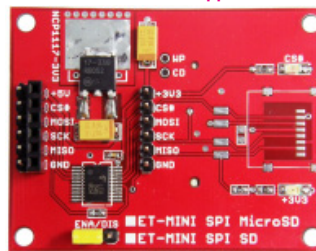
ET-MINI SPI SD (P-ET-A-000432)



ET-MINI SPI MICRO SD

ET-MINI SPI SD Upper

ET-MINI SPI SD Behind



ET-MINI SPI SD and MICRO SD is a Board with SOCKET SD CARD or MICRO SD CARD, including Circuit CONVERTER to convert Logic level (74LCX245) and Circuit REGULATE 3.3V/1A. So, it can interface this board with MCU 5V directly. It uses SPI Interface for interfacing with SD CARD.

ET-MINI SD/MMC (P-ET-A-00298)



Board with both SD and MMC SOCKET MEMORY CARD and Signal Pins are arranged to interface with Board Microcontroller easier. Additionally, it can be used with MINI MP3.

ET-MINI AUDIO OUT (P-ET-A-00296)



It is a mini amplifier with mini speaker on Board and STEREO JACK to connect with headphone or external amplifier set.