

ET-BASE PSoC CY8C29866
(P-ET-A-00218)



CY8C29866
32KBYTE FLASH PROGRAMMER
2KBYTE RAM, DIGITAL CLOCK 16,
ANALOG BLOCK 12, DIGITAL I/O 64 BIT

ET-BASE PSoC CY8C29866 which is PSoC Microcontroller from Cypress Co., Ltd. uses CHIP PSoC No. CY8C29866 size 100PIN TQFP. It is designed many I/O for test projects and connect with ET-BASE I/O V1 to develop In-System Programmer with ET-PSoC ISSP.

- 100 PIN TQFP CHIP PSoC NO. CY8C29866
- 32 KBYTE FLASH PROGRAMMER, 2 KBYTE RAM
- DIGITAL CLOCK 16, ANALOG BLOCK 12, DIGITAL I/O 64 BIT
- INTERNAL OSCILLATOR 48 MHZ
- 10 PIN ET-BUS I/O 6 CHANNEL 48 BIT I/O
- 10 PIN ET-PSoC ISSP DOWNLOAD PROGRAM
- 14 PIN CHARACTER LCD
- 2-CH.4 PIN RS232 (MAXIMUM 8 CHANNEL) ADM232 ON BOARD
- 7805 REGULATE ON BOARD • POWER SUPPLY 7-12VDC
- PCB SIZE 6.4 x 8.2 CM.
- BE ABLE TO CONNECT WITH ET-BASIC I/O V1

• ET-BASE PSoC CY8C29866 INCLUDES

1. ET-BASE PSoC CY8C29866 BOARD
2. CD-ROM PROGRAM
3. USER MANUAL GUIDE



ET-BASE PSoC CY8C27643
(P-ET-A-00219)



CY8C27643
16KBYTE FLASH PROGRAMMER
256BYTE RAM, DIGITAL CLOCK 8,
ANALOG BLOCK 12, DIGITAL I/O 44 BIT

ET-BASE PSoC CY8C27643 uses CHIP PSoC No. CY8C27643 size 48 PIN SSOP. It is designed for test basic project and connect with ET-BASE I/O to develop In-System Programmer with ET-PSoC ISSP.

- 48 PIN SSOP CHIP PSoC NO. CY8C27643
- 16 KBYTE FLASH PROGRAMMER, 256 BYTE RAM
- DIGITAL CLOCK 8, ANALOG BLOCK 12, DIGITAL I/O 44 BIT
- INTERNAL OSCILLATOR 48 MHZ
- 10 PIN ET-BUS I/O 4 CHANNEL 32 BIT I/O
- 10 PIN ET-PSoC ISSP DOWNLOAD PROGRAM
- 14 PIN CHARACTER LCD
- 2-CH.4 PIN RS232 MAX232 ON BOARD
- 7805 REGULATE ON BOARD • POWER SUPPLY 7-12VDC
- PCB SIZE 6.4 x 8.2 CM.
- BE ABLE TO CONNECT WITH ET-BASIC I/O V1

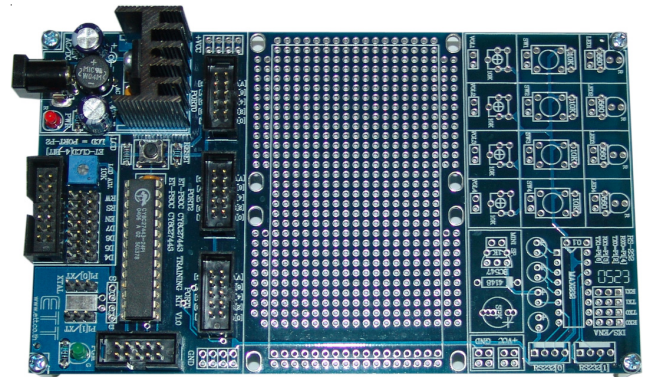
• ET-BASE PSoC CY8C27643 INCLUDES

1. ET-BASE PSoC CY8C27643 BOARD
2. CD-ROM PROGRAM
3. USER MANUAL GUIDE



ET-PSoC CY8C27443 V1 and ET-PSoC CY8C27443 V1 EXP use CHIP PSoC 28 PIN DIP TYPE No. CY8C27643. In V1 Board is desing for basic project and V1EXP is designed for connecting circuits. Both of them can develop In -System Programmer with ET-PSoC ISSP.

ET-PSoC CY8C27443 V1
(P-ET-A-00221)



ET-PSoC CY8C27443 V1 INCLUDES

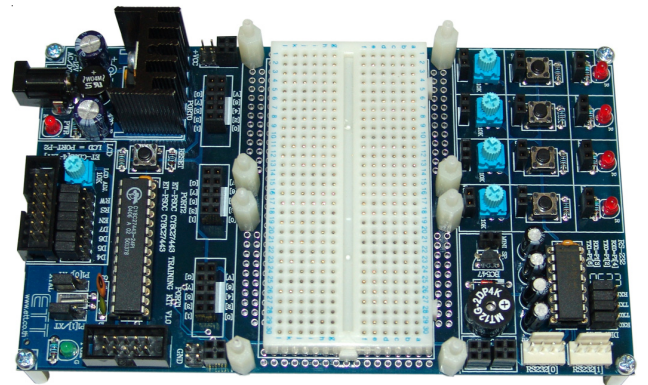
- 28 DIP TYPE CHIP PSoC NO. CY8C27443
- 16 KBYTE FLASH PROGRAM, 256 BYTE RAM
- DIGIT BLOCK 8, ANALOG BLOCK 12, DIGITAL I/O 24 BIT
- INTERNAL OSCILLATOR 48 MHZ
- 10 PIN ET-BUS IO 3 CHANNEL 24 BIT I/O
- 10 PIN ET-PSoC ISSP DOWNLOAD PROGRAM
- 7805 REGULATE ON BOARD • POWER SUPPLY 7-12VDC
- 8.5 x 5.3 CM. FREE AREA PCB
- PCB SIZE 15.3 x 9 CM.

• ET-PSoC CY8C27443 V1 INCLUDES

1. ET-PSoC CY8C27443 V1 BOARD
2. CD-ROM PROGRAM
3. USER MANUAL GUID



ET-PSoC CY8C27443 V1 EXP
(P-ET-A-00222)



ET-PSoC CY8C27443 V1 EXP INCLUDES

- SPECIFICATIONS OF ET-PSoC CY8C27443 AS SAME AS ET-PSoC CY8C27443 BUT THERE'S SOME ADDITIONAL SPECIFICATIONS SUCH AS TEST CIRCUIT, 3-CH.10 PIN BUS I/O FEMALE
- 390 POINTS AD-100 PROJECT BOARD (SIZE 81 x 42 x 9 mm.)USES WITH ET-JWBOX300 WIRE CONNECTOR(OPTION)
- TEST CIRCUIT ON BOARD
- 4-CH.VR
- 4-CH.SW
- 4 POINTS LED DOT
- MINI SPEAKER
- 2-CH.4 PIN RS232 WITH MAX232 ON BOARD

• ET-PSoC CY8C27443 V1 EXP INCLUDES

1. ET-PSoC CY8C27443 V1 EXP BOARD WITH PROJECT BOARD
2. CD-ROM PROGRAM
3. USER MANUAL GUIDE

