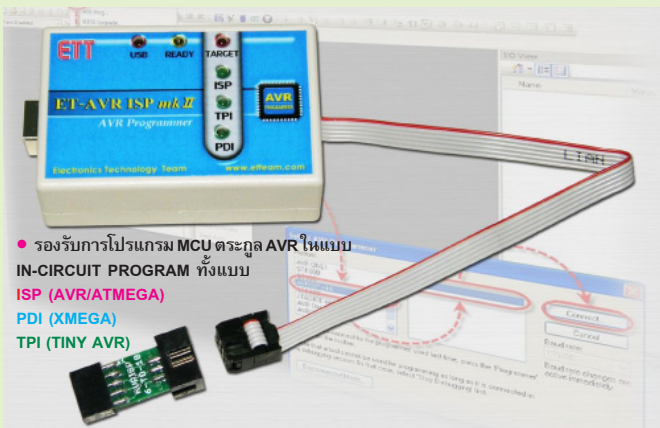


**ET-AVR ISP mkII**  
(P-ET-A-00429)

ET-AVR ISP mkII is the programmer for AVR Microcontroller by using PROTOCOL. Its capabilities are equivalent to AVR ISP mkII of ATMEL. It connects with computer through PORT USB and can program AVR MCU in the format of ISP, PDI, and TPI; moreover, it is compatible with AVR STUDIO of ATMEL.



- รองรับการโปรแกรม MCU ตระกูล AVR ในแบบ IN-CIRCUIT PROGRAM ทั้งแบบ  
ISP (AVR/ATMEGA)  
PDI (XMEGA)  
TPI (TINY AVR)



- Be compatible with Program AVR STUDIO
- Support AVR MCU programming in the format of IN-CIRCUIT PROGRAM; ISP(AVR/ATMEGA), PDI(XMEGA), TPI(TINY AVR)
- Can program both FLASH Memory and EEPROM internal MCU
- Can program both FUSE BIT and LOCK BIT of MCU
- Be compatible with TARGET BOARD that uses Power Supply in the range of 1.8V-5.5V
- Connect with computer PC through PORT USB 2.0 FULL SPEED
- Use Power Supply from PORT USB of PC

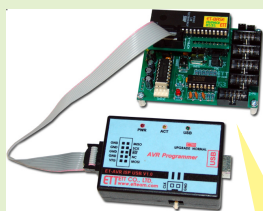
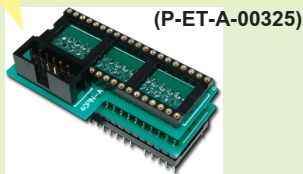
ET-AVR ISP mkII kit consists of...

1. Board ET-AVR ISP mkII
2. Cable 6PIN 2-Header Terminal
3. PCB CONVER 6 TO 10
4. Cable USB TYPE A/B
5. CD-ROM User's Manual and Program

**ET - ADAPTER AVR MODULE SET**

**ET-ADAPTER AVR ISP-40A**

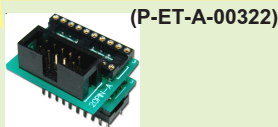
It uses with AVR 40 PIN such as AT90S8535, M8583, M16 and M32.



- The example of interfacing ET-ADAPTER MODULE with ET-AVR ISP USB V1.

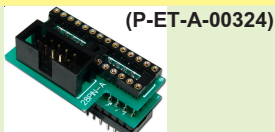
**ET-ADAPTER AVR ISP-20A**

It uses with AVR 20 PIN such as AT90S2313 and TN2313.



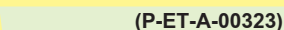
**ET-ADAPTER AVR ISP-28A**

It uses with AVR 28 PIN (NARROW PIN) such as M8, M48, M88 and M168.



**ET-ADAPTER AVR ISP-20B**

It uses with AVR 20 PIN such as TN26



**ET-ADAPTER AVR ISP-8A**

It uses with AVR 8 PIN such as TN12.



**ET-AVR ISP USB V1**  
(P-ET-A-00320)



ET-AVR ISP USB V1 is a board that is designed to download Program HEX FILE into AVR MCU of ATMEL. It uses ISP INTERFACE through Connector 10 PIN ET AVR ISP. It runs on computer PC through Connector USB PORT and it must be used with Program AVR STUDIO 1.XX or other software that supports AVR ISP. Its special specification is interfacing with ADAPTER and can program into MCU of AVR on board directly. Now, there are 5 types.

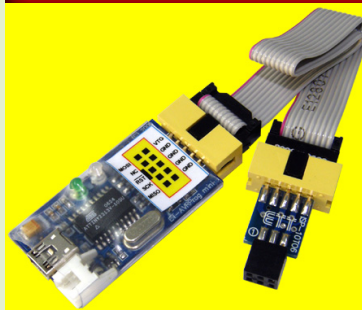
- Specifications of ET-AVR ISP USB V1 are equivalent to AVR ISP of ATMEL
- Can update new Firmware directly through Program AVR STUDIO 4
- Use POWER SUPPLY from 2.7V to 5.5V through USB PORT

• 10 PIN BUS ET AVR ISP can be used with ETT Board that has Connector 10 PIN ET-PSPI such as ET-AVR STAMP ATMEGA64/128, ET-BASE AVR ATMEGA64/128 and etc.

- ET-AVR ISP USB V1 consists of
- 1. Board ET-AVR ISP with box and cable
- 2. Cable USB TYPE A/B
- 3. CD-ROM.



**ET-AVR PROG MINI**  
(P-ET-A-00387)



ET-AVR PROG MINI is the new mini kit that is designed to download Program HEX File into AVR MCU of ATMEL in the format of ISP INTERFACE through Connector 10PIN ET AVR ISP and through Connector 6PIN ISP of ATMEL. It connects with computer PC through PORT USB to operate.

- Program data through PORT ISP and it is able to read, write, erase and protect data from reading.
- Be compatible with Target Board that uses 2.5V-5.5V Power Supply.
- Communicate through PORT USB
- Has Signal CLOCK to edit FUSE BITS if setting FUSE BITS of signal wrongly.
- Has LED to display status of USB, STATUS.
- Use Connector ISP according to the standard of ISP 10PIN and be compatible with Boards such as ET-AVR STAMP ATMEGA64/128, ET-BASE AVR, ET-EASY168 STAMP and etc.

- Kit includes Connector CONVERT to convert connector from ISP 10 PIN into ISP 6 PIN, so it is compatible with other AVR Boards
- Be compatible with Programs that support PROTOCOL AVR910 such as AvrProg, AvrOspII, AVRdude, CodeVision
- Support the application of WINDOWS 98, ME, 2000, XP, VISTA
- Kit includes high quality of Cable USB TO 5P MINI that is no problem if using with LABTOP as same as the general Cable USB in the market.

- ET-AVR PROG MINI consists of
- 1. Board ET-AVR PROG MINI
- 2. Cable 10PIN Header
- 3. PCB CONVER ISP-10 TO 6
- 4. Connector USB TO 5P MINI
- 5. CD-ROM User's Manual and Program

