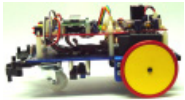
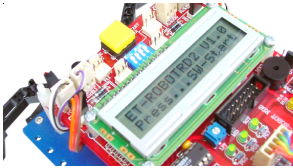
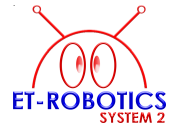


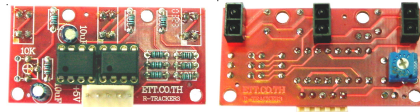
ET-ROBOT RD2 (P-ET-A-00141)



It is set for learn and study robot with CPU PHILIPS P89C51RD2/V51RD2



LCD DISPLAY 16 CHARACTER 2 LINE



R-TRACKER 3
SENSOR TRACKER 3 CHANNEL

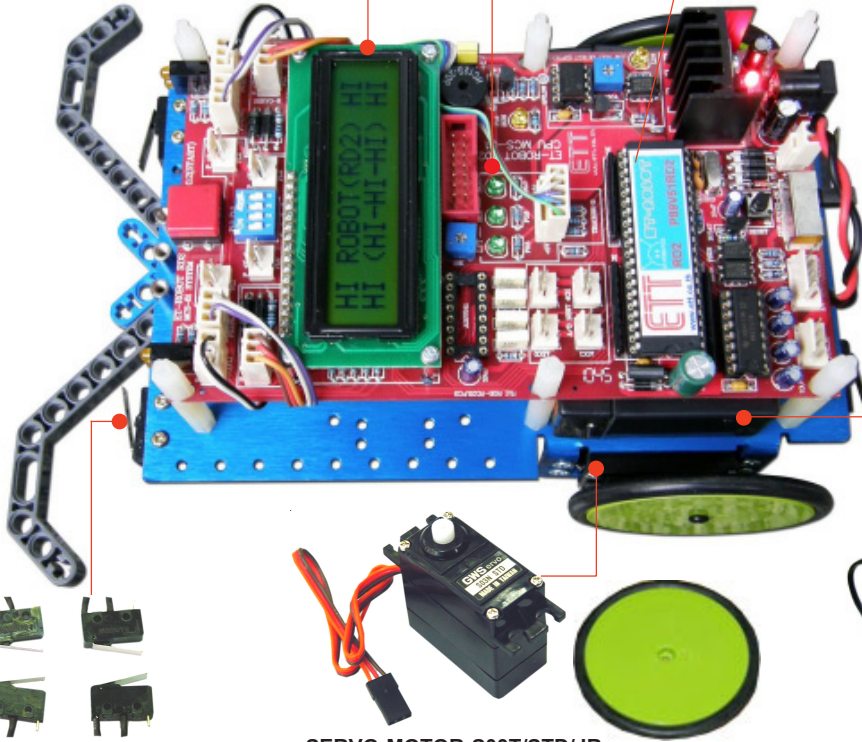
64 Kbyte Flash



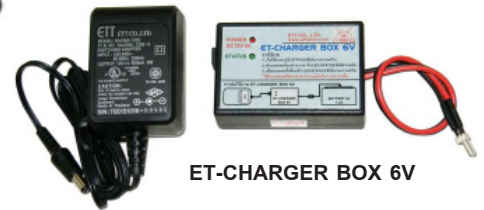
CPU Mcs51 89V51RD2



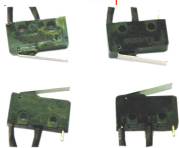
PLATE ALUMINUM wide 3 mm.



BATTERY 6V-1.2/1.3A



ET-CHARGER BOX 6V



SW SENSOR MICRO SW
WITH BUMPER LEGO



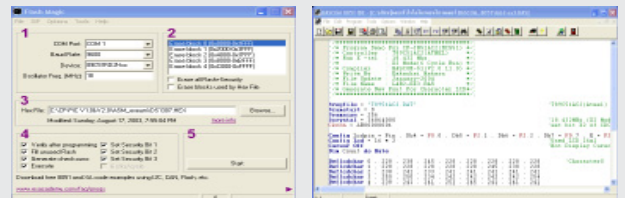
SERVO MOTOR S03T/STD/JR
TORQUE 7.2 Kg - cm

ET-ROBOT RD2 (CPU MCS51) ROBOT SERVO MOTOR FROM ETT TEAM USE CPU MICROCONTROLLER MCS51 FAMILY No. P89C51RD2/V51RD2 FROM PHILIPS WHICH IS ABLE TO DEVELOP PROGRAM FOR USING WITH COMPUTER AND DOWNLOAD PROGRAM ON COMPUTER INTO BOARD ET-ROBOT RD2 DIRECTLY THROUGH RS232 PORT.

BE ABLE TO DEVELOP THEN PROGRAM FOR USING WITH CPU IN VARIOUS STYLE SUCH AS LANGUAGE ASSEMBLY, C, BASIC.

SPECIFICATIONS ET-ROBOT RD2

- ROBOT PLATE MADE OF ALUMINUM GUILTED WITH ANODIAED BLUE 3MM. THICK
- USE 2-DC SERVO MOTOR S03T/STD/JR WITH TORQUE 7.2 KG.CM/ SERVO MOTOR TO MODIFY WHEEL TO TURN LEFT/RIGHT
- CPU MCS-51 P89C51RD2/V51RD2 FROM PHILIPS WITH 64 KBYTE FLASH MEMORY WHICH IS ABLE TO DELETE AND REWRITE, 1 KBYTE RAM, RUN 6 CLOCK/18.432 MHz ON BOARD
- LCD DISPLAY 16 CHARACTER 2 LINE
- RS232 PORT MAX232 ON BOARD WITH CIRCUIT ETT DOWNLOAD
- A TO D 4 CH 12 BIT IC ADS7841 (OPTION)
- RTC DS1307 (OPTION), EEPROM 24XX (OPTION)
- CIRCUIT LOW VOLT DETECT (OPTION), MINI SPEAKER ON BOARD
- 1 INPUT SW, 4 INPUT DIP SW, 10 BIT I/O PORT, 4 LED OUTPUT, 3 INPUT LED,



- Write program on Computer PC, download program into BOARD ET-ROBOT RD2 directly
- Be able to develop then program for using with CPU in various style such as Language ASSEMBLY, C, BASIC

ACCESSORIES OF SENSOR ON BOARD ET-ROBOT RD2

- R-TRACKER 3 IS LINE DETECTED SENSOR WITH INFRARED 3 CHANNEL, USE INFRARED SENSOR NO. PRP-359F x 3 WITH IC OPAMP
- 4-SW SENSOR WITH MICRO SW FOR BUFFER LOGO

ACCESSORIES OF POWER SUPPLY

- SEALED RECHARGEABLE BATTERY 6V 1.2-1.3A, BE ABLE TO USE MORE THAN 2 HOURS, WITH BATTERY CHARGER ET-CHARGER 6V
- THERE'S MANUAL, CD-ROM EXAMPLE ASSEMBLY LANGUAGE PROGRAM, C LANGUAGE, BASIC LANGUAGE, ET-DOWNLOAD RD2 CABLE, RS232 9 PIN CABLE
- ROBOT RD2 WITH BATTERY 6V 1.3A SIZE (WxLxH): 15 x 20.5 x 10 CM. WEIGHT 0.95 KG. AND BE ABLE USE MORE THAN 2 HOURS