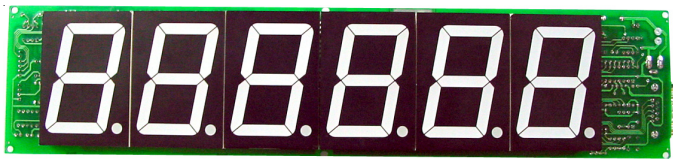


**ET-DSP6 (P-ET-A-00117)**

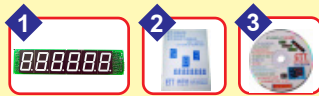


ET-DSP6...is 6 Digit Display Board with 7-Segment Red 2.3 inch tall LED. It uses 8 Bit Serial Shift to Parallel Latch with CPU AT89C2051 and example program to develop board such as Display Board, Counter Display, Price Tag Display

- CPU AT89C2051 (2KB FLASH), RUN 11.0592 MHz
- 6 DIGIT 7-SEGMENT RED LED SIZE 2.3 INCH
- RS232 PORT (MAX232 ON BOARD) AND OPTO ISOLATION TX
- RS422/485 IC 75176 (OPTION), 10 PIN ET BUS
- RTC DS1307 (OPTION), EEPROM 12C 24XX (OPTION)
- POWER ON RESET/WATCH DOG DS1232 ON BOARD
- POWER 7805 ON BOARD INPUT SUPPLY DC 9-12V
- PCB SIZE 36 x 8 CM, DISPLAY SIZE 29 x 7 CM

• ET-DSP6 INCLUDES;

1. ET-DSP6 BOARD
2. USER MANUAL
3. CD-ROM



**ET-DSP4 (P-ET-A-00051)**

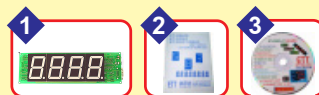


Large Display Board is used 4 Digit 7-Segment Red LED (4.7 x 7 cm.) with 8 Bit Serial Shift to Parallel Latch.

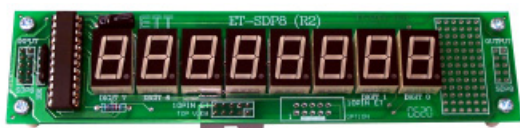
- CPU AT89C2051 (2 KB FLASH), RUN 11.059 MHz
- 4 DIGIT 7 SEGMENT RED LED 2.3 INCH TALL
- RS232 PORT (MAX232) IN RX, TX AND RS232 OPTO ISOLATION IN RX ONLY
- RS422/485 75176 (OPTION)
- RTC DS1202 (OPTION), EEPROM 93C46 (OPTION)
- 7805 ON BOARD, POWER ON RESET/WATCH DOG DS1232 ON BOARD
- POWER SUPPLY DC 9-12V
- PCB SIZE 26 x 8 CM.

• ET-DSP4 INCLUDES;

1. ET-DSP4 BOARD
2. USER MANUAL
3. CD-ROM



**ET-SDP8 (P-ET-A-00049)**

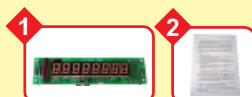


8 Digit 7-Segment LED Display Board, it uses IC MAX 7219 to Scan Display without using CPU. It's easy because it uses 3 cables to control.

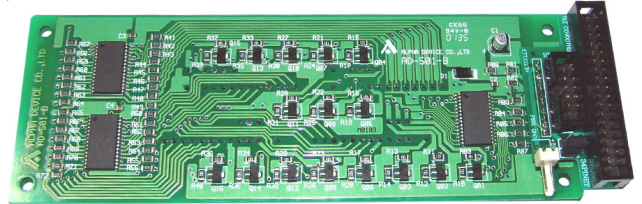
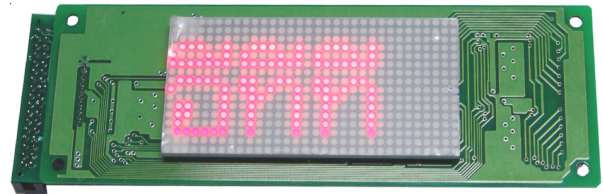
- COMMON CATHODE 7-SEGMENT LED AND 8-CH.SUPER BRIGH RED LED 0.56 INCH TALL
- BE ABLE CHANGE LED 7-SEGMENT INTO OTHER LED
- USERS ORDER BOARD FOR A TIME AND AFTER THAT BOARD WILL CONTROL DISPLAY
- 2 MODES DISPLAY; BCD AND SEGMENT
- POWER SUPPLY 5VDC
- SIZE 16.5 x 3.8 CM.

• ET-SDP8 INCLUDES;

1. ET-SDP8 BOARD
2. USER MANUAL



**ET-DISPLAY 16 X 32 V1 (P-ET-A-00228)**



ET-DISPLAY 16 X 32 V1 ET-DISPLAY 16 x 32 V1 BE ABLE TO CONNECT WITH ETT'S BOARD THROUGH PORT 34 PIN AND 10 PIN, BOARD SIZE 16 x 32 DOT (512 DOT) BE ABLE TO DISPLAY IN THAI

- IN ET-DISPLAY 16 x 32 V1 USES AD-SOI-B DISPLAY MONITOR FROM ALPHA DEVICE CO. LTD. AS RED LED SIZE 16 x 32 WITH 3-CH.IC LC7932M (16 BIT BI-DIRECTIONAL SHIFT REGISTER) TO RUN DOT MATRIX LED
- DISPLAY BOARD BE ABLE TO CONNECT WITH ETT'S BOARD SUCH AS I/O PORT 34 PIN AND 10 PIN ET BUS

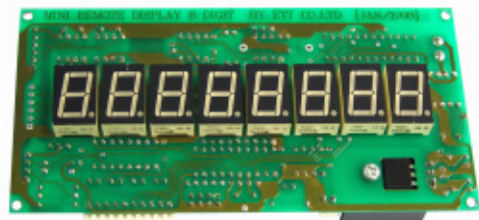
- PCB SIZE 16.5 x 5.4 CM.
- LED DISPLAY 4.1 x 8.2 CM.(RED LED SIZE 2 MM.)

• ET-DISPLAY 16 x 32 V1 INCLUDES;

1. DISPLAY 16 x 32 BOARD
2. 34 PIN PAIR CABLE HEADER
3. 10 PIN PAIR CABLE HEADER,
4. CD-ROM



**ET-REM8 (P-ET-A-00050)**



Small Display Board is used 8 Digit 7 Segment Red LED 0.56 inch tall with IC MAX7219.

- CPU AT89C2051 (2KB FLASH), RUN 11.059 MHZ
- 8 DIGIT 7 SEGMENT RED LED 0.56 INCH TALL
- RS232 PORT (MAX232) AND RS232 OPTO ISOLATION
- RS422/485 75176 (OPTION), RTC DS1202 (OPTION)
- EEPROM 93C46 (OPTION)
- 7805 ON BOARD, POWER ON RESET/WATCH DOG DS1232 (OPTION), POWER SUPPLY AC/DC 9-12V
- PCB SIZE 13.5 x 6.5 CM.

• ET-REM8 INCLUDES;

1. ET-REM8 BOARD
2. USER MANUAL
3. CD-ROM

